

National Committee on Uniform Traffic Control Devices

13236 North 7th Street, Suite 4-259, Phoenix, Arizona 85022
Phone/Text: 231-4-NCUTCD (231-462-8823)
E-mail: secretary@ncutcd.org Website: <https://ncutcd.org>

Item No.: 24B-TTC-07

NCUTCD RECOMMENDATION FOR CHANGES TO THE MANUAL ON UNIFORM TRAFFIC CONTROL DEVICES

COMMITTEE / TASK FORCE: Temporary Traffic Control Technical Committee
ITEM NUMBER: 24B-TTC-07
TOPIC: Center / Bike Lane Closed Warning Sign
ORIGIN OF REQUEST: TTC review of 11th Edition
AFFECTED SECTIONS OF MUTCD: 6H.07, Lane(s) Closed Signs (W20-5, W20-5a, W20-5b, and W9-3)

DEVELOPMENT HISTORY:

Approved by TTC TC: 06/27/2024, 01/08/2025
Approved by NCUTCD Council: 01/09/2025

This is a recommended change to the MUTCD that has been approved by the NCUTCD Council. This proposal does not represent a revision of the MUTCD and does not constitute official MUTCD standards, guidance, or options. It will be submitted to FHWA for consideration for inclusion in a future MUTCD revision. The MUTCD can be revised only through the federal rulemaking process.

SUMMARY:

In the MUTCD 11th Edition, the W9-3 sign is a symbol sign illustrating an interior lane shift. This symbol sign replaced the CENTER LANE CLOSED AHEAD W9-3 word legend sign from the 2009 MUTCD. This approved change revives the word message sign CENTER LANE CLOSED AHEAD as a version of the W20-5 sign to use when closing a center two-way left turn lane. Also, in Typical Applications a new sign "BIKE LANE CLOSED AHEAD" (W20-5b) was introduced. Upon inspection of the MUTCD 11th edition, TTC recommends that the policy contained in Section 6H.07 be changed to reflect changes occurred in 11th edition graphically.

DISCUSSION:

In the 2003 MUTCD, the W9-3 sign was the word legend warning sign CENTER LANE CLOSED AHEAD and the W9-3a sign was a symbol warning sign illustrating a center lane closed ahead. In the 2009 MUTCD, the W9-3a symbol sign was deleted and the word legend warning sign CENTER LANE CLOSED AHEAD (W9-3) was the only available sign for Manual users. In the MUTCD 11th Edition the symbol sign W9-3 (same as 2003 W9-3a sign) is now designated as an interior lane shift ahead sign and used in TA's 6P-21 & 6P-38 and replaces the previous W9-3 word legend sign. This approved change revives the word message sign CENTER LANE CLOSED AHEAD as a version of the W20-5 sign. The Temporary Traffic Technical Committee has reviewed the current sign guidance and has determined that there are

36 situations where a symbol indicating a lane closed is appropriate, but there may also be
37 situations or conditions that guidance with words is more appropriate than the symbol such as
38 where a center two-way left turn lane is closed. The TTC Technical Committee added guidance
39 for the W20-5 warning sign where the sign legend can be RIGHT, or LEFT, or CENTER LANE
40 CLOSED. The 2004 Standard Highway Signs (SHS) publication and 2012 SHS Supplement
41 show this as an option. The page from the 2012 SHS Supplement is included as information
42 only at the end of this document.

43
44 The 11th edition of the MUTCD introduced a new “BIKE LANE CLOSED AHEAD” (W20-5b)
45 warning sign to Figures 6H-1, 6P-47, and 6P-48. However, no guidance is given in Chapter 6H
46 for using the new sign. The Temporary Traffic Committee recommends that the sign be added
47 to Section 6H.07.

48
49 **RECOMMENDED MUTCD CHANGES:**
50 The following present the proposed changes to the current MUTCD within the context of the
51 current MUTCD language. Proposed additions to the MUTCD are shown in blue underline and
52 proposed deletions from the MUTCD are shown in ~~red strikethrough~~. Changes previously
53 approved by NCUTCD Council (but not yet adopted by FHWA) are shown in green double
54 underline for additions and ~~green double strikethrough~~ for deletions. In some cases,
55 background comments may be provided with the MUTCD text. These comments are indicated
56 by bracketed white text in shaded green.

PART 6 TEMPORARY TRAFFIC CONTROL
CHAPTER 6H. TTC ZONE WARNING SIGNS

**Table 6H-1. Temporary Traffic Control Zone Warning Sign and Plaque Sizes
(Sheet 2 of 2)**

[Only a few sample lines of Table 6H-1 shown.]

Sign or Plaque	Sign Designation	Section	Conventional Road	Freeway or Expressway	Minimum
Lane(s) Closed (with distance)	W20-5, 5a	6H.07	36x36	48x48	30x30
Bike Lane Closed (with distance)	W20-5b	6P.04 6H.07	36x36	-	30x30

Section 6H.07 Lane(s) Closed Signs (W20-5, W20-5a, [W20-5b](#), and W9-3)

Standard:

01 The Lane(s) Closed sign (see Figure 6H-1) shall be used in advance of that point where one or more through lanes of a multi-lane roadway are closed.

02 For a single lane closure, the Lane Closed (W20-5) sign (see Figure 6H-1) shall use the legend **RIGHT (LEFT, [CENTER](#)) LANE CLOSED**. Where two or more adjacent lanes are closed, the W20-5a sign (see Figure 6H-1) shall use the legend **XX RIGHT (LEFT, [CENTER](#)) LANES CLOSED**.

Guidance:

02a The BIKE LANE CLOSED (W20-5b) sign (see Figure 6H-1) should be used in advance of that point where the bicycle lane is closed.

Option:

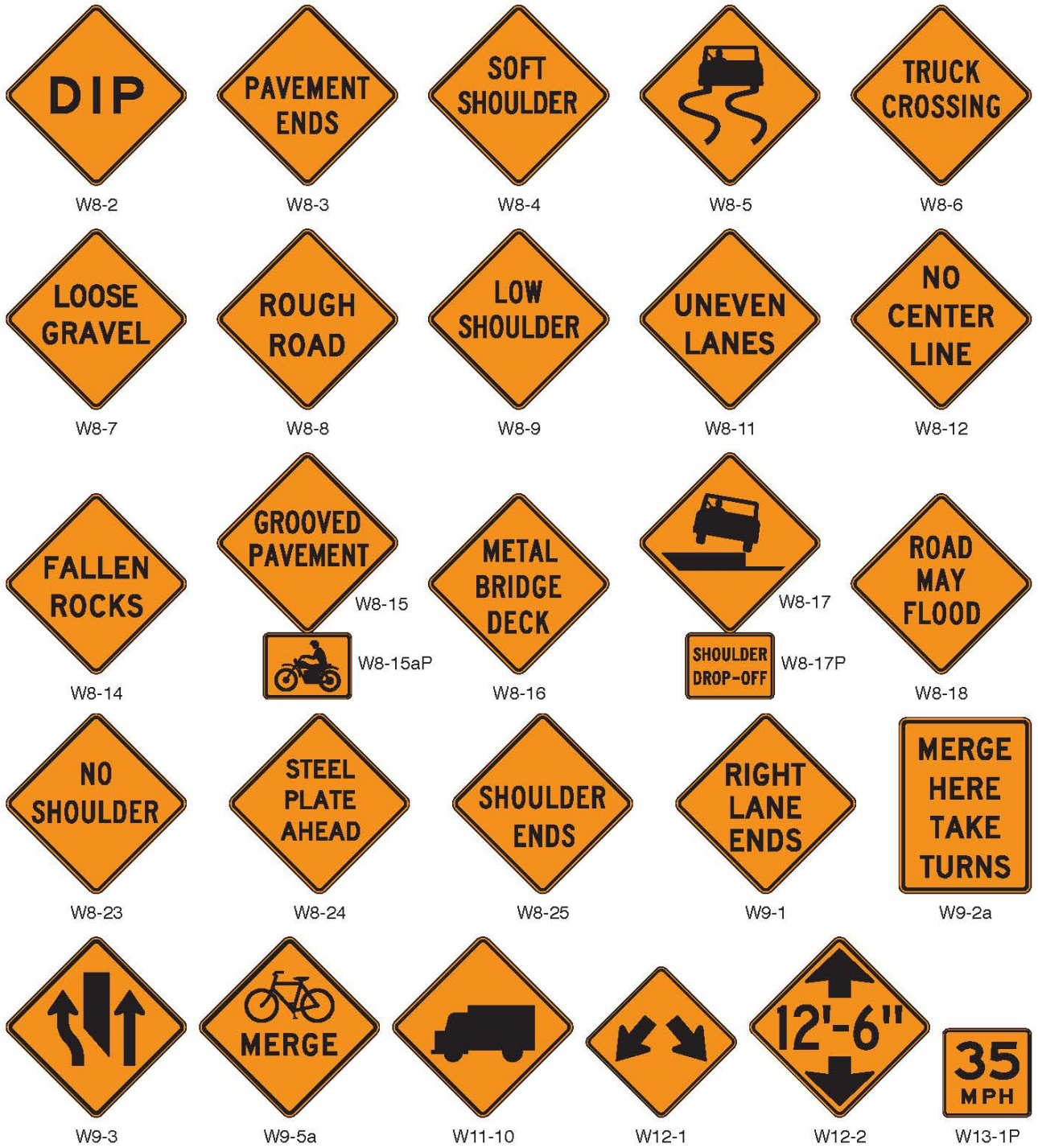
03 The distance legend may be either XX FEET, XX MILES, or AHEAD.

Guidance:

04 The Interior Lane Shift (W9-3) sign (see Figure 6H-1) should be used in advance of that point where work occupies an interior lane(s) and approaching motor vehicle traffic is directed to the right or left of the work zone in the lane(s) by using a shifting taper to route traffic around the closed interior lane(s).

05 The Center Lane Closed (W20-5) sign (see Figure 6H-1) should be used in advance of that point where work occupies a center two-way left turn lane and approaching motor vehicle traffic is directed to the right of the work zone in the lane.

Figure 6H-1. Warning Signs and Plaques in Temporary Traffic Control Zones (Sheet 2 of 4)



Note: See Chapter 2C for information on the application of these signs.

Figure 6H-1. Warning Signs and Plaques in Temporary Traffic Control Zones (Sheet 3 of 4)



Note: See Chapter 2C for information on the application of these signs.

[^] An optional STREET WORK word message sign is shown in the "Standard Highway Signs" publication.

^{**} An optional STREET CLOSED word message sign is shown in the "Standard Highway Signs" publication.

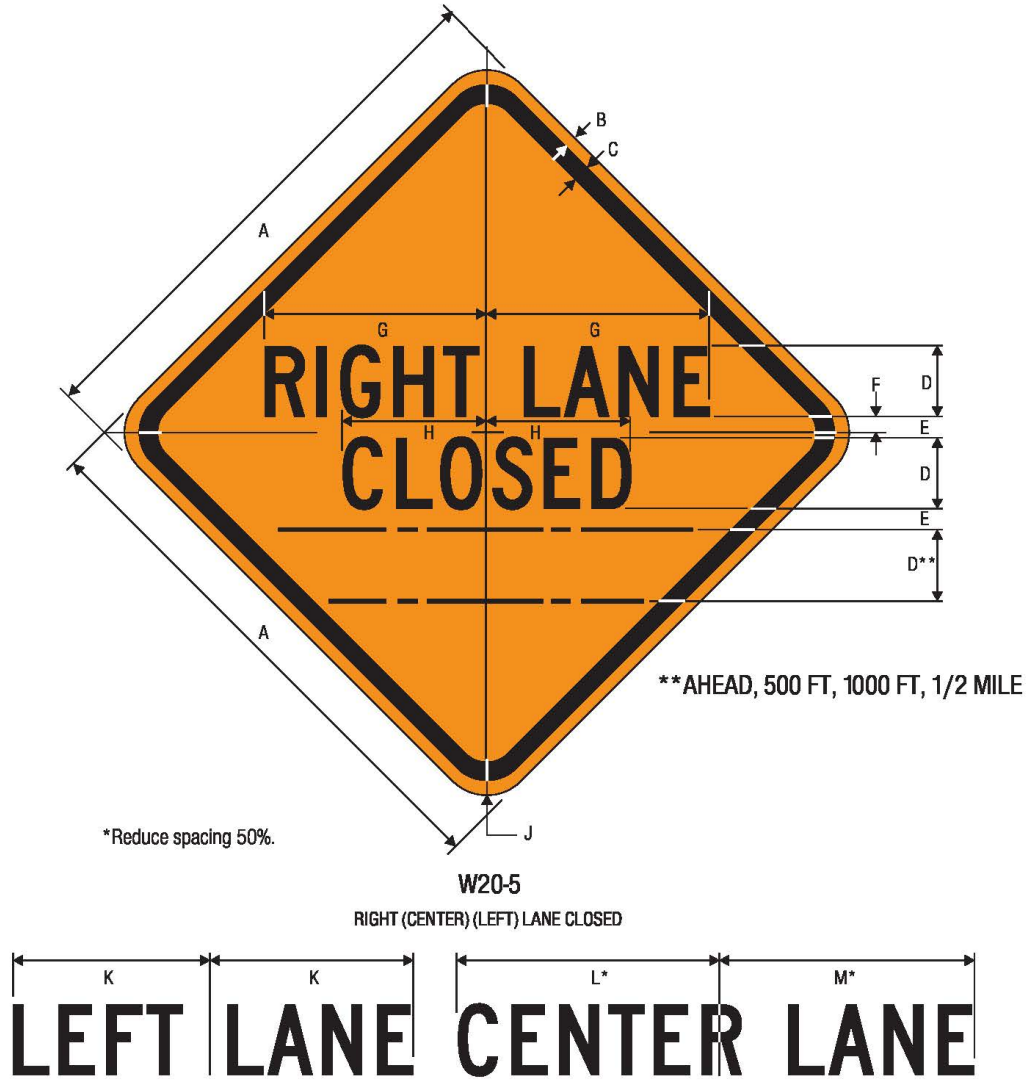
^{***} An optional FLAGGER (W20-7a) word message sign is shown in the "Standard Highway Signs" publication.

^{****} An optional FRESH TAR word message sign is shown in the "Standard Highway Signs" publication.

88
89

[The following page from the Standard Highway Signs (SHS) Publication is included for information only to show that CENTER LANE is an option used on the W20-5 sign.]

W20-5
Revised 3/1/2012



A	B	C	D	E	F	G	H	J	K	L	M
30	.5	.75	4 C	1.625	2	12.614	8.203	1.875	11.604	13.420	13.280
36	.625	.875	5 C*	2.75	.375	15.75	10.25	2.25	14.5	16.25	15.75
48	.75	1.25	6 C*	3.375	.5	19	12.313	3	17.438	20.375	19.375

COLORS: LEGEND, BORDER — BLACK
BACKGROUND — ORANGE (RETROREFLECTIVE)

90