

ATTACHMENT NO. 2

**Changes to Part 7B of MUTCD 2003
Proposed by School Area Task Force and
Regulatory & Warning Sign Technical Committee**

Approved by NCUTCD Council January 7, 2005

Note: The base document is the 2003 Edition of the MUTCD, Part 7B. The proposed changes adopted by the R & W Sign Technical Committee on June 24, 2004 are overlaid on the base document. Proposed deletions are shown as ~~strikethroughs~~ and proposed new language is shown in **blue. Where that new proposed language is simply a restatement of existing MUTCD 2003 language, it is underlined. Those Sections where no change or only a Section numbering change is proposed are not shown.**

ADD TWO NEW DEFINITIONS TO SECTION 1A.13

School – A public or private educational institution recognized by the state education authority for one or more grades K through 12 or as otherwise defined by the State.

School Zone – A designated segment of a highway approaching, adjacent to, and beyond school buildings or grounds or along which school related activity occurs, where special traffic law enforcement activity or increased fines for traffic violations are authorized.

CHAPTER 7B. SIGNS

CHANGE THE NAME OF THE S1-1 SIGN FROM “School Advance Warning” TO “School” IN TABLE 7B-1 AND THROUGHOUT PART 7.

Section 7B.07 Sign Color for School Warning Signs

Standard:

Except as noted in the Option, school warning signs shall have a yellow background with a black legend and border unless otherwise stated in this Manual for a specific sign.

Option:

All school warning signs in addition to the following signs may have a fluorescent yellow-green background with a black legend and border:

- A. ~~School~~ School Advance Warning sign (S1-1);
- B. SCHOOL BUS STOP AHEAD sign (S3-1);
- C. SCHOOL plaque (S4-3);
- D. The "SCHOOL" portion of the School Speed Limit sign (S5-1);
- E. XXX METERS (XXX FEET) plaque (W 16-2 series);
- F. AHEAD plaque (W 16-9p);
- G. Diagonal Arrow plaque (W 16-7p); and
- H. Reduced Speed School Zone Ahead sign (S4-5, S4-5a).

Guidance:

When the fluorescent yellow-green background color is used, a systematic approach featuring one background color within a zone or area should be used. The mixing of standard yellow and fluorescent yellow-green backgrounds within a zone or area should be avoided.

~~DELETE EXISTING SECTION 7B.08 AND
REPLACE IT WITH NEW SECTIONS 7B.08, 7B.09, and 7B.10~~

~~**Section 7B.08 School Advance Warning Assembly (S1-1 with Supplemental Plaque)**~~

Guidance:

~~The School Advance Warning assembly (see Figure 7B-1) should be installed in advance of locations where school buildings or grounds are adjacent to the highway, except where a physical barrier such as fencing separates school children from the highway.~~

~~**Standard:**~~

~~**The School Advance Warning Assembly shall be installed in advance of any installation of the School Crosswalk Warning assembly (see Figure 7B-2), or in advance of the first installation of the School Speed Limit assembly (see Figure 7B-3).**~~

~~If used, the School Advance Warning assembly shall be installed not less than 45 m (150 ft) nor more than 210 m (700 ft) in advance of the school grounds or school crossings.~~

~~If used, the School Advance Warning assembly shall consist of a School Advance Warning (S1-1) sign supplemented with a plaque with the legend AHEAD (W16-9p) or XXX METERS (XXX FEET) (W 16-2 or W16-2a) to provide advance notice to road users of crossing activity.~~

NEW SECTIONS 7B.08, 7B.09, AND 7B.10 TO REPLACE SECTION 7B.08

Section 7B.08 School Sign (S1-1)

Support:

Many state and local jurisdictions find it beneficial to advise road users that they are approaching a school that is adjacent to a highway, where additional care is needed, even though no school crossing is involved and the speed limit remains unchanged. Additionally, some jurisdictions designate School Zones that have a unique legal standing in that photo radar systems or other special enforcement techniques may be used or fines for speeding or other traffic violations within School Zones are increased. It is important and sometimes legally necessary to mark the beginning and end points of these School Zones so that the roaduser is given proper notice.

The School (S1-1) (see Figure 7B-1) sign has three applications:

School Area/Zone

To warn road users they are approaching school buildings or grounds, a school crossing, or school related activity adjacent to the highway, and to mark the beginning of a designated School Zone.

School Advance Crossing

Combined with an AHEAD or XXX METERS (XXX FEET) plaque to comprise the School Advance Crossing assembly, to warn road users that they are approaching a crossing where school children cross.

School Crossing

Combined with a Diagonal Downward Pointing Arrow (W16-7) plaque to comprise the School Crossing assembly, to warn approaching road users of the location of a crossing where school children cross.

THE NATIONAL COMMITTEE REVIOUSLY RECOMMENDED
DELETING THE IN-STREET SIGN OPTION NOW INCLUDED IN MUTCD 2003

Option:

A 300 mm (12 in) reduced size in-street School ~~Advance Warning~~ (S1-1) sign (see Figure 7B-4 5), installed in compliance with the mounting height and breakaway requirements for In-Street Pedestrian Crossing (R1-6 or R1-6a) signs (see Section 2B.12 14) may be used in advance of a school crossing to supplement the ground-mounted school warning signs. A 300 x 150 mm (12 x 6 in) reduced size AHEAD (W16-9p) plaque may be mounted below the reduced size in-street School ~~Advance Warning~~ (S1-1) sign. NOTE: FIGURE 7B-4 TO BE RENUMBERED 7B-5

Section 7B.09 School Area/Zone Sign

Standard:

The School (S1-1) sign shall be installed at the start of a School Zone designated under state or local statute to mark its beginning point (see Figure 7B-2).

The School (S1-1) sign shall be used in advance of the first installation of a School Speed Limit sign assembly or S5-1 sign (see Figure 7B-4).

When used in advance of the School Speed Limit sign assembly or to warn road users of a school area, the School (S1-1) sign shall be installed-in accordance with the requirements of Section 2C.05 Placement of Warning Signs.

Option:

The School (S1-1) sign may be installed in advance of locations where school buildings or grounds are adjacent to the highway.

The School (S1-1) sign, when used in this application, may be supplemented with a SCHOOL (S4-3) plaque or an appropriate enforcement sign or plaque, such as a FINES HIGHER (R2-6) sign (see Section 2B.15).

Section 7B.10 School Advance Crossing Assembly

Standard:

The School Advance Crossing assembly (See Figure 7B-1) shall consist of a School (S1-1) sign supplemented with an AHEAD (W16-9) or XXX METERS (XXX FEET) (W16-2 or 2a) plaque.

Except as provided in the Option below, the School Advance Crossing assembly shall be used in advance of the first installation of a School Crossing assembly (see Figure 7B-3).

When used, the School Advance Crossing assembly shall be installed in accordance with the requirements of Section 2C.05 Placement of Warning Signs.

Option:

The School Advance Crossing assembly may be omitted where a School (S1-1) sign is installed in advance of the School Crossing assembly (see Section 7B.09).

Section 7B.09 ~~11~~ School Crosswalk Warning Crossing Assembly (S1-1 with Diagonal Arrow)

Standard:

~~If used, †~~ **The School Crosswalk Warning Crossing assembly** (see Figure 7B-1) ~~shall be installed at the marked crosswalk, or as close to it as possible, and~~ shall consist of a School Advance Warning (S1-1) sign supplemented with a diagonal downward pointing arrow (W16-7p) plaque to show the location of the crossing

When used, the School Crossing assembly shall be installed at the crossing or as close to it as possible (See Figure 7B-3).

~~The School Crosswalk Warning~~ **Crossing** assembly shall not be used at ~~marked crosswalks~~ **crossings** other than those adjacent to schools and those on established school pedestrian routes.

~~The School Crosswalk Warning~~ **Crossing** assembly shall not be installed on approaches controlled by a STOP sign.

Guidance:

~~The School Crosswalk Warning assembly should be installed at marked crosswalk(s), including those at signalized locations, used by students going to and from school (see Figure 7B-2) as determined by an engineering study.~~

THE NATIONAL COMMITTEE REVIOUSLY RECOMMENDED DELETING THE IN-STREET SIGN OPTION AND STANDARD NOW INCLUDED IN MUTCD 2003

Option:

The In-Street Pedestrian Crossing (R1-6 or R1-6a) sign (see Section 2B.53) may be used at unsignalized midblock school crossings. When used at a school crossing, a SCHOOL (S4-3) plaque may be mounted above the sign.

A 300 mm (12 in) reduced size School ~~Advance Warning~~ (S1-1) sign (see Figure 7B-4 5), may be used at an unsignalized school crossing instead of the In-Street Pedestrian Crossing (R1-6 or R1-6a) sign. A 300 x 150 mm (12 x 6 in) reduced size AHEAD (W16-9p) plaque may be mounted below the reduced size in-street School ~~Advance Warning~~ (S1-1) sign. NOTE: FIGURE 7B-4 TO BE RENUMBERED 7B-5

Standard:

If an In-Street Pedestrian Crossing sign or a reduced size in-street School ~~Advance Warning~~ (S1-1) sign is placed in the roadway, the sign support shall comply with the mounting height and breakaway requirements for In-Street Pedestrian Crossing (R1-6 or R1-6a) signs (see Section 2B.12 14).

The In-Street Pedestrian Crossing sign and the reduced size in-street School ~~Advance Warning~~ (S1-1) sign shall not be used at signalized locations.

**SECTIONS 7B.10 THROUGH 7B.14 ARE TO BE RENUMBERED
AS SECTIONS 7B.12 THROUGH 7B.16**

Figure 7B-1. School Area Signs

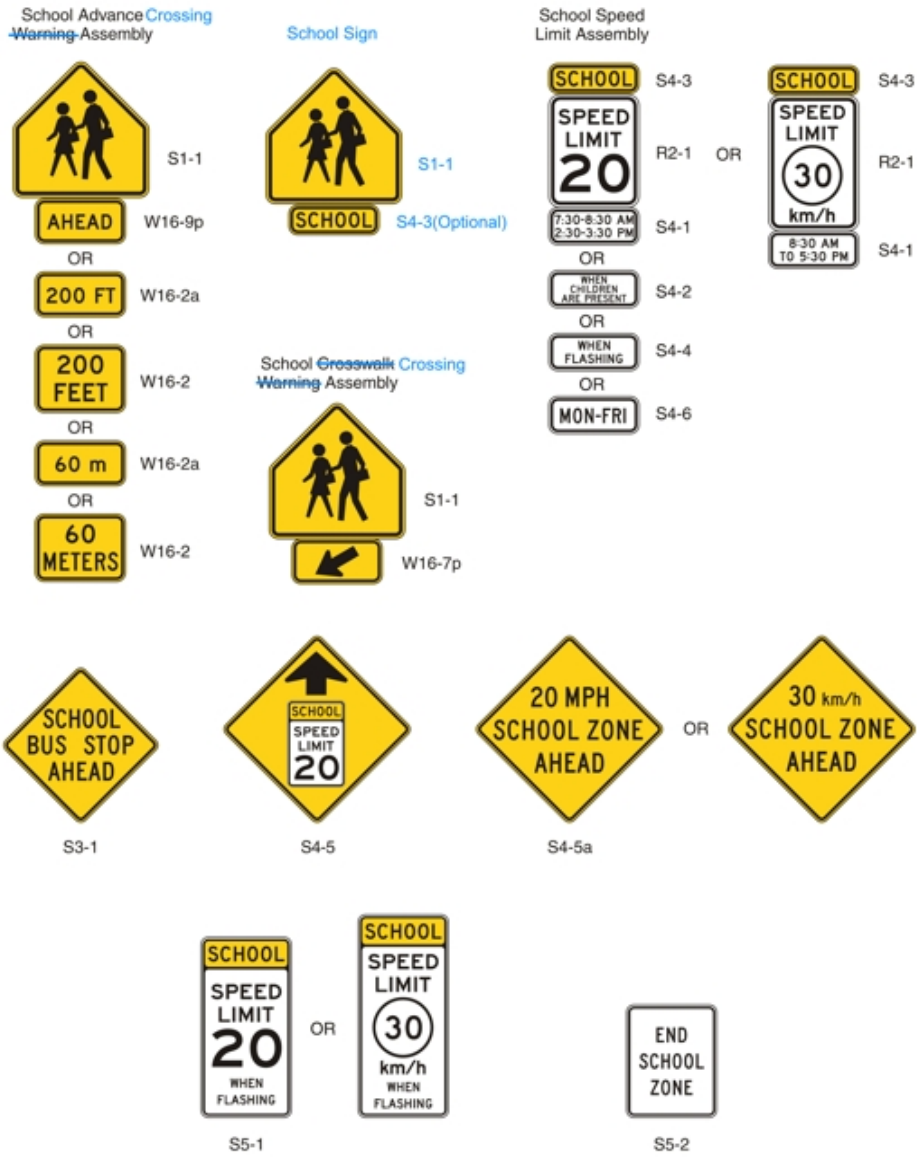
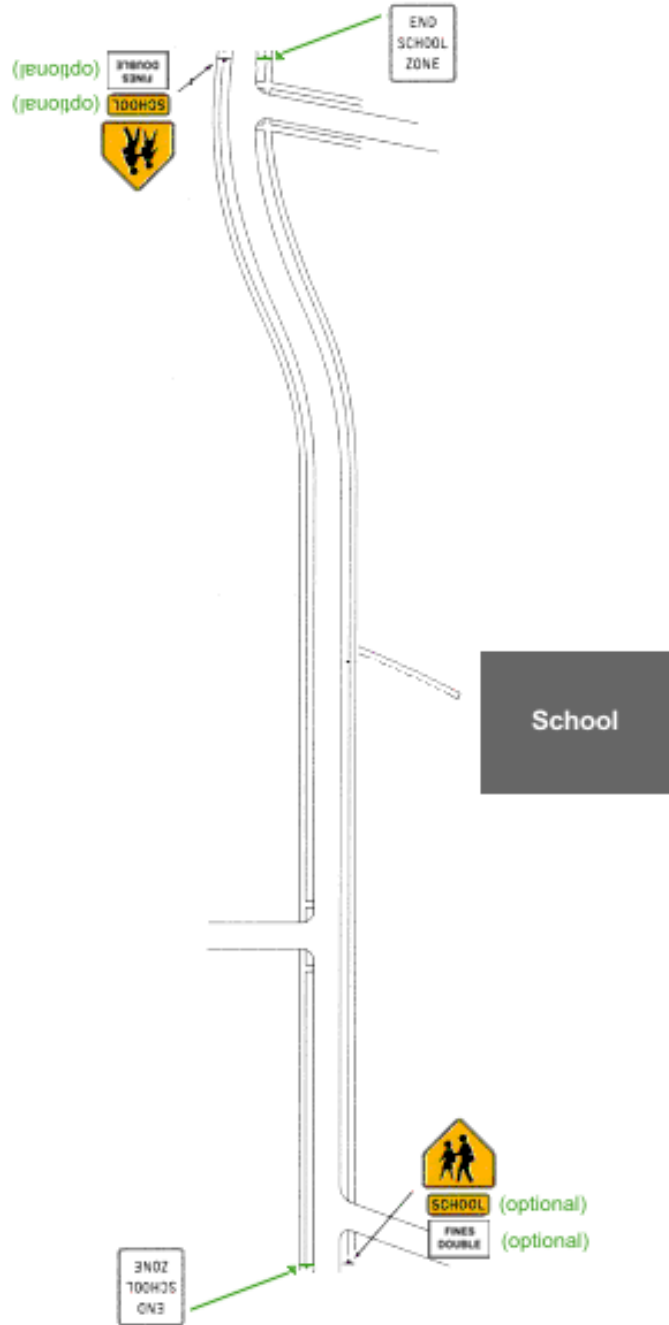
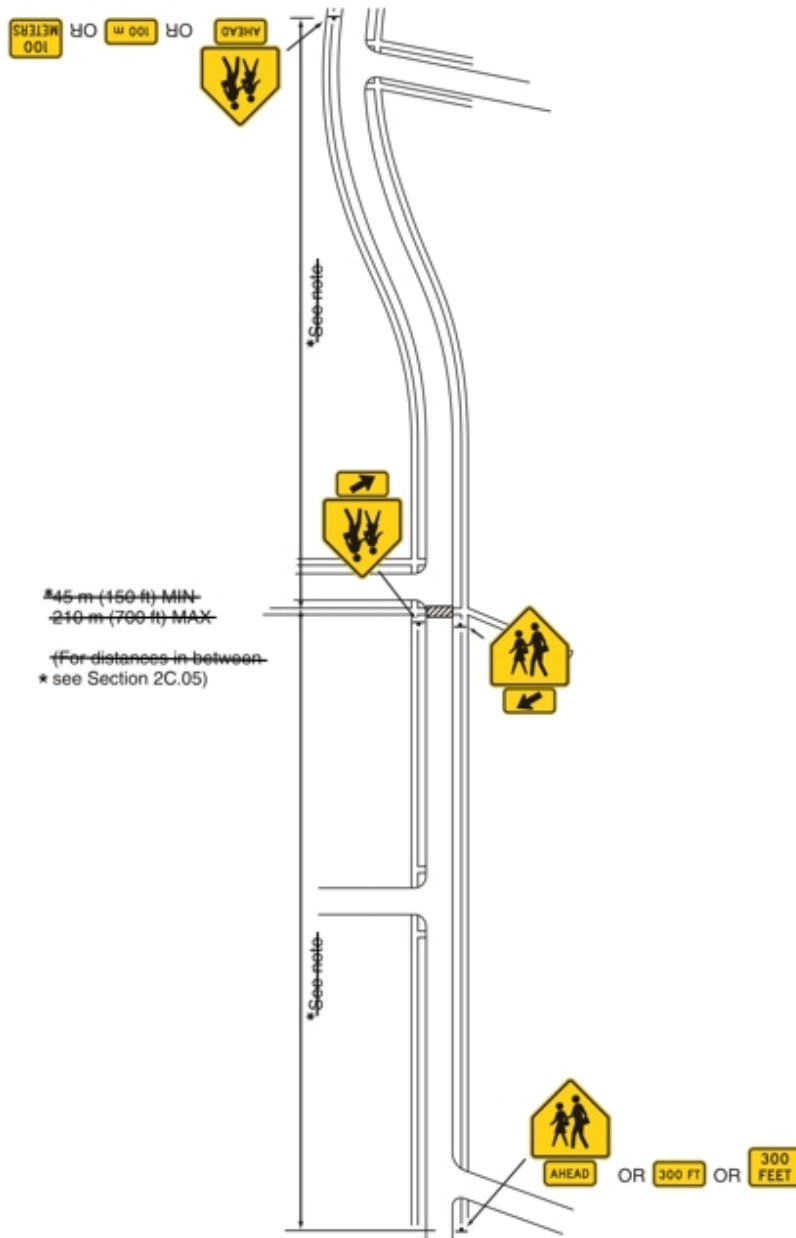


Figure 7B-2 Example of Signing for a School Zone



7B-3
Figure 7B-2. Examples of Signing for School Crosswalk Warning Assembly



7B-4
Figure 7B-3. Examples of Signing for School Area Traffic Control with School Speed Limits

