



National Committee on Uniform Traffic Control Devices

13236 North 7th Street, Suite 4-259, Phoenix, Arizona 85022
Phone/Text: 231-4-NCUTCD (231-462-8823)
E-mail: secretary@ncutcd.org Website: <https://ncutcd.org>

Item No.: 25A-TTC-02

NCUTCD PROPOSAL FOR CHANGES TO THE MANUAL ON UNIFORM TRAFFIC CONTROL DEVICES

COMMITTEE / TASK FORCE: Temporary Traffic Control Technical Committee
ITEM NUMBER: 25A-TTC-02
TOPIC: Relocate Late Merge Section
ORIGIN OF REQUEST: TTC Task Force #1 / TTC Task Force #10 – Chapter 6N
AFFECTED SECTIONS OF MUTCD: 6G.07, 6H.08, 6N.19

DEVELOPMENT HISTORY:

Approved by TTC TC: 01/09/2025
Approved by NCUTCD Council:

This is a proposed change to the MUTCD that has been developed by a technical committee, joint committee, or joint task force of the NCUTCD. The NCUTCD is distributing this to its sponsoring organizations for review and comment. Sponsor comments will be considered in revising the proposal prior to NCUTCD Council consideration. This proposal does not represent a revision of the MUTCD and does not constitute official MUTCD standards, guidance, options, or support. If approved by the NCUTCD Council, the recommended changes will be submitted to FHWA for consideration for inclusion in a future MUTCD revision. The MUTCD can be revised only through the federal rulemaking process.

SUMMARY:

The Late Merge section is recommended to be relocated from Section 6N.19 to a new section after Section 6H.08 in TTC Warning Signs.

DISCUSSION:

The Late Merge section is recommended to be relocated under a new section in Section 6H (Merge Here Take Turns) which is a key warning sign involved with Late Merge. The figure for Late Merge is also proposed to move from Section 6N.19 to Section 6H so it is all located together in Part 6.

Through a variety of proposals, the content in Chapter 6N is proposed to be relocated to a variety of other sections and Chapter 6N will be removed in its entirety.

32 **RECOMMENDED MUTCD CHANGES:**

33 The following present the proposed changes to the current MUTCD within the context of the
34 current MUTCD language. Proposed additions to the MUTCD are shown in blue underline and
35 proposed deletions from the MUTCD are shown in ~~red strikethrough~~. Changes previously
36 approved by NCUTCD Council (but not yet adopted by FHWA) are shown in green double
37 underline for additions and ~~green double strikethrough~~ for deletions. In some cases,
38 background comments may be provided with the MUTCD text. These comments are indicated
39 by bracketed white text in shaded green. Deletions made by a technical committee or task
40 force after initial distribution to sponsoring organizations are shown in ~~highlighted red~~
41 ~~strikethrough and Helvetica text~~. Additions made by a technical committee or task force after
42 initial distribution to sponsoring organizations are shown in underline blue and Helvetica text.

44 **PART 6. TEMPORARY TRAFFIC CONTROL**

45 **CHAPTER 6G. TTC ZONE REGULATORY SIGNS**

46 **Section 6G.07 STAY IN LANE Signs (R4-9 and R4-9a)**

47 [Council previously approved recommended changes in 24A-TTC-07.]

48 Option:

49 01 A STAY IN LANE (R4-9) sign (see Figure 6G-1) may be used ~~where a~~ on multi-lane highways ~~shift~~
50 ~~has been incorporated as part of the TTC on a highway~~ to direct road users to stay in their lane until
51 conditions permit shifting to another lane ~~around road work that occupies part of the roadway on a multi-~~
52 ~~lane highway.~~

53 *Guidance:*

54 01a *If a STAY IN LANE sign is used, it should be accompanied by solid white lines to discourage or solid*
55 *double white lines to prohibit lane changing (see Section 3B.06).*

56 02 A STAY IN LANE TO MERGE POINT (R4-9a) sign (see Figure 6G-1) should be used during late
57 merge operations (see Section ~~6N.19~~ 6H.08a) to direct traffic to use all available lanes until the merge
58 point is reached.

59 **CHAPTER 6H. TTC ZONE WARNING SIGNS**

60 **Section 6H.08 Lane Ends Signs (W4-2 and ~~W9-2a~~)**

61 Option:

62 01 The Lane Ends (W4-2) sign (see Figure 6H-1) may be used to warn drivers of the reduction in the
63 number of lanes for moving motor vehicle traffic in the direction of travel on a multi-lane roadway.

64 *Guidance:*

65 02 ~~The MERGE HERE TAKE TURNS (W9-2a) sign (see Figure 6H-1) should be used to identify the~~
66 ~~merge point at which vehicles from alternate lanes take turns merging during Late Merge applications~~
67 ~~(see Section 6N.19).~~

68 [The following is a new section that is populated with content moved from Sections 6H.08 and 6N.19.
69 Only modifications to Section 6N.19 are indicated.]

70 **Section 6H.08a MERGE HERE TAKE TURNS (W9-2a)**

71 *Guidance:*

72 01 The MERGE HERE TAKE TURNS (W9-2a) sign (see Figure 6H-1) should be used to identify the
73 merge point at which vehicles from alternate lanes take turns merging during Late Merge applications.

77 Support:
78 02 The Late Merge is designed to use all available lanes until the merge point is reached at the lane
79 closure taper rather than merging as soon as possible into the open lane. The Late Merge addresses many
80 of the challenges that are associated with traffic operations in advance of lane closures at TTC zones such
81 as queue length, capacity, and driver satisfaction.

82 Option:
83 03 Late Merge systems may consist of static or portable changeable message signs.

84 *Guidance:*
85 04 *Static Late Merge signing should consist of the STAY IN LANE TO MERGE POINT (R9-4a R4-9a¹)*
86 *sign (see Section 6G.07) and the MERGE HERE TAKE TURNS (W9-2a) sign (see Figure 6N-1 6H-2).*

87 Option:
88 05 The following messages may be used on changeable message signs at an upstream location during
89 the Late Merge application:

- 90 A. “STAY IN YOUR LANE/MERGE AHEAD”
- 91 B. “STAY IN YOUR LANE/MERGE AHEAD XX MILES”
- 92 C. “USE BOTH LANES/TO MERGE POINT”
- 93 D. “USE BOTH LANES/STOPPED TRAFFIC AHEAD”
- 94 E. “SLOW TRAFFIC AHEAD/USE BOTH LANES”

95 06 The following messages are typically used on changeable message signs at the merge point during
96 the Late Merge application:

- 97 A. “TAKE YOUR TURN/MERGE HERE”
 - 98 B. “MERGE HERE/TAKE TURNS”
- 99

100 CHAPTER 6N. TYPES OF TEMPORARY TRAFFIC CONTROL ZONE ACTIVITIES

101 [The following section (Section 6N.19) is to be relocated as a new section after Section 6H.08.]

102 ~~Section 6N.19 Late Merge~~

103 ~~Support:~~
104 ~~01—The Late Merge is designed to use all available lanes until the merge point is reached at the lane~~
105 ~~closure taper rather than merging as soon as possible into the open lane. The Late Merge addresses many~~
106 ~~of the challenges that are associated with traffic operations in advance of lane closures at TTC zones such~~
107 ~~as queue length, capacity, and driver satisfaction.~~

108 ~~Option:~~
109 ~~02—Late Merge systems may consist of static or portable changeable message signs.~~

110 ~~Guidance:~~
111 ~~03—Static Late Merge signing should consist of the STAY IN LANE TO MERGE POINT (R9-4a) sign and~~
112 ~~the MERGE HERE TAKE TURNS (W9-2a) sign (see Figure 6N-1).~~

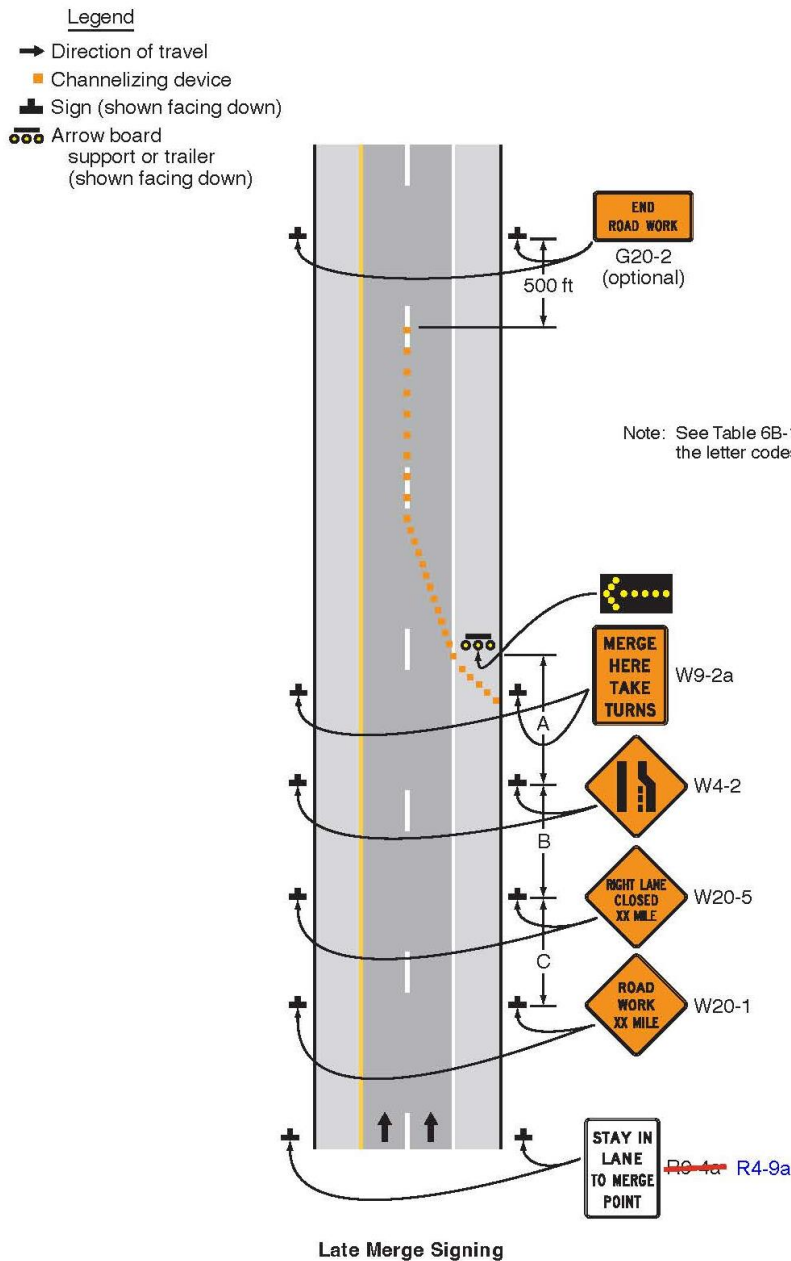
113 ~~Option:~~
114 ~~04—The following messages may be used on changeable message signs at an upstream location during~~
115 ~~the Late Merge application:~~

- 116 ~~F. “STAY IN YOUR LANE/MERGE AHEAD”~~
- 117 ~~G. “STAY IN YOUR LANE/MERGE AHEAD XX MILES”~~
- 118 ~~H. “USE BOTH LANES/TO MERGE POINT”~~
- 119 ~~I. “USE BOTH LANES/STOPPED TRAFFIC AHEAD”~~

¹ Known error. From MUTCD website: Paragraph 3: The reference to “R9-4a” should be change to “R4-9a.”

120 J. ~~“SLOW TRAFFIC AHEAD/USE BOTH LANES”~~
 121 05—The following messages are typically used on changeable message signs at the merge point during
 122 the Late Merge application:
 123 C. ~~“TAKE YOUR TURN/MERGE HERE”~~
 124 D. ~~“MERGE HERE/TAKE TURNS”~~

125 **Figure 6N-1 6H-2. Late Merge**
 126 [North arrow deletion approved by Council in 24A-TTC-03]



127 2

² Known error. From MUTCD website: The designation “R9-4a” should be changed to “R4-9a.”