



# National Committee on Uniform Traffic Control Devices

13236 North 7th Street, Suite 4-259, Phoenix, Arizona 85022  
Phone/Text: 231-4-NCUTCD (231-462-8823)  
E-mail: secretary@ncutcd.org Website: <https://ncutcd.org>

Item No.: 25A-BIK-01  
Technical Corrections

## NCUTCD PROPOSAL FOR CHANGES TO THE MANUAL ON UNIFORM TRAFFIC CONTROL DEVICES

**COMMITTEE / TASK FORCE:** Bicycle Technical Committee  
**ITEM NUMBER:** 25A-BIK-01  
**TOPIC:** Chapter 9B Technical Corrections  
**ORIGIN OF REQUEST:** Bicycle Technical Committee  
**AFFECTED SECTIONS OF MUTCD:** 9B.02, 9B.11, 9B.16, 9B.17, 9B.21

### DEVELOPMENT HISTORY:

Approved by Bicycle TC: 01/08/2025  
Approved by NCUTCD Council:

*This is a proposed change to the MUTCD that has been developed by a technical committee, joint committee, or joint task force of the NCUTCD. The NCUTCD is distributing this to its sponsoring organizations for review and comment. Sponsor comments will be considered in revising the proposal prior to NCUTCD Council consideration. This proposal does not represent a revision of the MUTCD and does not constitute official MUTCD standards, guidance, options, or support. If approved by the NCUTCD Council, the recommended changes will be submitted to FHWA for consideration for inclusion in a future MUTCD revision. The MUTCD can be revised only through the federal rulemaking process.*

### SUMMARY:

This proposal includes minor changes to address technical corrections to Chapter 9B.

### DISCUSSION:

This proposal includes proposed changes to Chapter 9B to address minor technical corrections including deletion of North Arrows from Chapter 9B Figures and minor editorial text changes.

28 **RECOMMENDED MUTCD CHANGES:**

29 The following present the proposed changes to the current MUTCD within the context of the  
30 current MUTCD language. Proposed additions to the MUTCD are shown in blue underline and  
31 proposed deletions from the MUTCD are shown in ~~red strikethrough~~. Changes previously  
32 approved by NCUTCD Council (but not yet adopted by FHWA) are shown in green double  
33 underline for additions and ~~green double strikethrough~~ for deletions. In some cases,  
34 background comments may be provided with the MUTCD text. These comments are indicated  
35 by bracketed white text in shaded green. Deletions made by a technical committee or task  
36 force after initial distribution to sponsoring organizations are shown in ~~highlighted red~~  
37 ~~strikethrough and Helvetica text~~. Additions made by a technical committee or task force after  
38 initial distribution to sponsoring organizations are shown in underline blue and Helvetica text.

39 **PART 9. TRAFFIC CONTROL FOR BICYCLE FACILITIES**

40 **CHAPTER 9B. REGULATORY SIGNS**

41 **Section 9B.02 EXCEPT BICYCLES Regulatory Plaque (R3-7bP)**

42 **Support:**

43 01 There are circumstances where it might be appropriate to exempt bicyclists from regulatory  
44 restrictions applied to other traffic.

45 *Guidance:*

46 02 *Where an engineering study or engineering judgment demonstrates that it is appropriate to exempt*  
47 *bicyclists from the provisions of a regulatory sign, the EXCEPT BICYCLES (R3-7bP) regulatory plaque*  
48 *(see Figure 9B-1) should be used.*

49 **Support:**

50 03 Figure 9B-2 shows examples of how the EXCEPT BICYCLES (~~W16-20P~~ R3-7bP) Known error  
51 correction issued by FHWA regulatory plaque can be applied.

52 04 Section 9C.05 contains information regarding the EXCEPT BICYCLES (W16-20p) warning plaque  
53 when applicable to a warning sign.

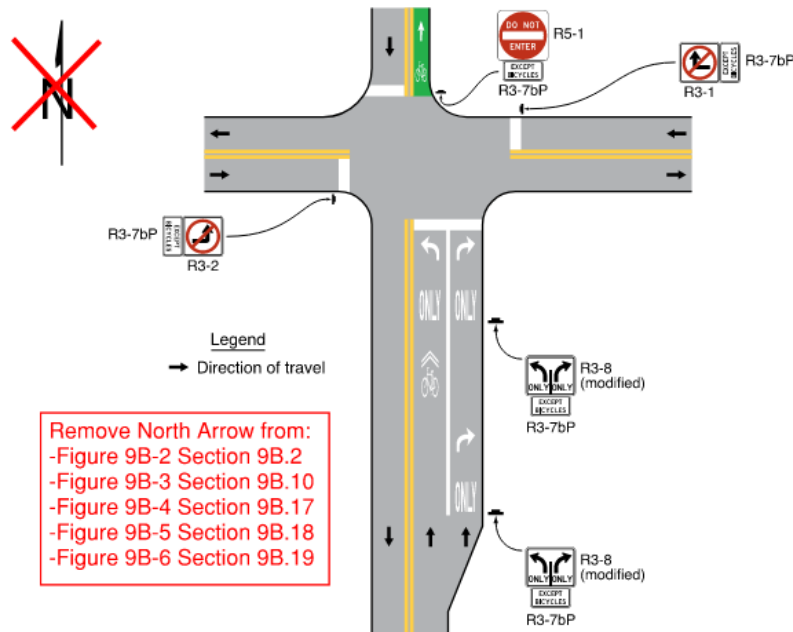
54 **Standard:**

55 05 **The EXCEPT BICYCLES regulatory plaque shall not be used to exempt bicyclists from the**  
56 **legal requirement of a STOP or YIELD sign, Yield Here to Pedestrians Signs, Stop Here for**  
57 **Pedestrians Signs, or a traffic signal indication.**

58 06 **Where a regulatory sign, such as the No Left Turn (R3-2) sign (see Section 2B.26), is installed**  
59 **on the same post or mounting as a STOP sign or YIELD sign, the EXCEPT BICYCLES regulatory**  
60 **plaque shall not be installed in conjunction with the regulatory sign on that post or mounting that**  
61 **includes the STOP sign or YIELD sign.**

62 07 **The EXCEPT BICYCLES regulatory plaque shall be placed below the regulatory sign that it**  
63 **supplements.**

69 **Figure 9B-2. Example of Applications of EXCEPT BICYCLES Regulatory Plaques**



70  
71 **Section 9B.11 Bicycles Use Ped Signal Sign (R9-5)**

72 Option:

- 73 01 The Bicycles Use Ped Signal (R9-5) sign (see Figure 9B-1) may be used where the crossing of a  
74 street by bicyclists is controlled by pedestrian signal indications.  
75 02 In order to remind drivers who are making turns to yield to or stop for pedestrians or bicyclists, a  
76 Turning Vehicles Yield to Pedestrians (R10-15) sign, Turning Vehicles Stop for Pedestrians (R10-15a)  
77 sign (see Section 2B.59), or Left Turn Yield to Bicycles (R10-12b) sign (see Section 9B.21) may be used.

78 *Guidance:*

- 79 03 If used, the R9-5 sign should be installed in the vicinity of where bicyclists ~~will~~ would be crossing the  
80 street.

81 **Section 9B.16 Bicycles Use Shoulder Only Sign (R9-21)**

82 Option:

- 83 01 The Bicycles Use Shoulder Only (R9-21) sign (see Figure 9B-1) may be used to designate locations  
84 on a freeway or expressway where bicycles are allowed, but must remain on an available and usable  
85 shoulder. [delete comma]

86 *Guidance:*

- 87 02 The Bicycles Use Shoulder Only sign should be limited to use on freeways and expressways.  
88 03 The Bicycles Use Shoulder Only sign should be placed adjacent to the entrance ramp or entrance to  
89 the freeway at or near the location where the full-width shoulder resumes beyond the entrance ramp  
90 taper.

91 **Section 9B.17 Signing for Bicycles on Freeways and Expressways**

92 **Standard:**

- 93 01 The Bicycles Must Exit (R9-22) sign (see Figure 9B-1) shall be used in advance of a location  
94 where a freeway or expressway becomes prohibited to bicycle travel, and shall be placed in advance  
95 of the intersection or exit ramp prior to the prohibited segment of roadway (see Figure 9B-4).

96 [Delete comma]

97 Option:  
98 02 The Bicycles Must Exit sign may be used below a post-mounted Exit Direction sign.

99 **Standard:**  
100 03 **If the Bicycles Must Exit sign is used, a No Bicycles (R5-6) sign (see Figure 9B-1) shall be**  
101 **placed downstream from the intersection or exit ramp departure point where the prohibited**  
102 **segment of freeway or expressway begins. The No Bicycles sign shall not be placed below the Exit**  
103 **Gore sign.**

104 Option:  
105 04 The ON FREEWAY (R5-10dP) plaque (see Figure 9B-1) may be used with an appropriate Selective  
106 Exclusion sign to indicate a prohibition along ramps leading to an adjacent or parallel freeway.

107 Support:  
108 05 Section 2B.45 contains information on regulatory signing for prohibiting bicycles from using  
109 particular roadways or facilities.

### 110 **Section 9B.21 Left Turn Yield to Bicycles Sign (R10-12b)**

111 Option:  
112 01 The Left Turn Yield to Bicycles (R10-12b) sign (see Figure 9B-1) may be used to emphasize the  
113 requirement for motorists to yield to bicyclists in situations where the motorist is turning across a bicycle  
114 movement that may be unexpected in direction, location, or some other quality that would be inconsistent  
115 with ~~the typical~~ a bicycle lane.

116 Support:  
117 02 Section 2B.59 contains provisions on the placement and use of regulatory Traffic Signal signs.