



# National Committee on Uniform Traffic Control Devices

13236 North 7th Street, Suite 4-259, Phoenix, Arizona 85022  
Phone/Text: 231-4-NCUTCD (231-462-8823)  
E-mail: secretary@ncutcd.org Website: <https://ncutcd.org>

1  
2  
3  
4  
5  
6  
7  
8  
9  
10  
11  
12  
13  
14

## National Committee on Uniform Traffic Control Devices (NCUTCD) Recommended Changes to Proposed Text for 11<sup>th</sup> Edition of the MUTCD Docket Number: FHWA-2020-0001

15  
16  
17  
18  
19  
20  
21  
22

**Federal Register Item Number:** 479, 480

**NPA MUTCD Section Number:** Sections 6F.01 to 6F.03

**Legend:** Base text shown in proposal is the NPA “clean” proposed text.

- [NCUTCD recommendation for text to be added in final rule.](#)
- ~~NCUTCD recommendation for text to be deleted in final rule.~~
- [NCUTCD recommendation for text to be moved/relocated in final rule.](#)
- NPA text that was not previously approved by NCUTCD but is now approved.
- Explanatory note: [\[Note that explains purpose of recommended change.\]](#)

The following pages present NCUTCD recommendations for changes to the MUTCD NPA proposed text, tables, and figures for Chapter 6F. Below is a short summary of the NCUTCD position for each section of this chapter. A more detailed summary is provided at the beginning of each section.

- NPA #479, Section 6F.01: NCUTCD agrees with NPA content (no changes recommended)
- NPA #480, Section 6F.02: Changes recommended based on Council action in spring 2021
- NPA #N/A, Section 6F.03: NCUTCD agrees with NPA content (no changes recommended)

---

## CHAPTER 6F. TEMPORARY TRAFFIC CONTROL ZONE SIGNS - GENERAL

23  
24  
25  
26  
27

**Section 6F.01 Comments:** NCUTCD agrees with 6F.01 as presented in the NPA.

### Section 6F.01 General Characteristics of TTC Zone Signs

Support:

TTC zone signs convey both general and specific messages by means of words, symbols, and/or arrows and have the same three categories as all road user signs: regulatory, warning, and guide.

Option:

Where the color orange is required, the fluorescent orange color may also be used.

Support:

The fluorescent version of orange provides higher conspicuity than standard orange, especially during twilight.

Option:

Standard orange flags, flashing beacons, or flashing warning lights may be used in conjunction with signs.

**Standard:**

42 When standard orange flags or flashing warning lights are used in conjunction with  
43 signs, they shall not block the sign face.

44 Except as provided in Section 2A.07, the sizes for TTC signs and plaques shall be as  
45 shown in Tables 6G-1, 6H-1, and 6I-1. The sizes in the minimum column shall only be used  
46 on low-volume rural roads, local streets, or roadways where the operating speed is 30 mph  
47 or less.

48 Option:

49 The dimensions of signs and plaques shown in Tables 6G-1, 6H-1, and 6I-1 may be increased  
50 wherever necessary for greater legibility or emphasis.

51 Guidance:

52 *Deviations from standard sizes as prescribed in this Manual should be in 6-inch increments.*

53 Support:

54 Sign design details are contained in the “Standard Highway Signs and Markings” book (see  
55 Section 1A.05).

56 Section 2A.04 contains additional information regarding the design of signs, including an  
57 Option allowing the development of special word message signs if a standard word message or  
58 symbol sign is not available to convey the necessary regulatory, warning, or guidance  
59 information.

60 **Standard:**

61 All signs used at night shall be either retroreflective or illuminated to show the same  
62 shape and similar color both day and night.

63 The requirement for sign illumination shall not be considered to be satisfied by street,  
64 highway, or strobe lighting.

65 Option:

66 Sign illumination may be either internal or external.

67 Signs may be made of rigid or flexible material.

---

69  
70 **Section 6F.02 Comments:** NCUTCD generally agrees with 6F.02 as presented in the NPA, but  
71 recommends revising as follows:

- 72 • If PROWAG is adopted as a Standard, reference in the Manual
- 73 • Add a reference to new proposed Section 1D.13 to the third Standard

## 75 **Section 6F.02 Sign Placement**

76 Guidance:

77 *Signs should be located on the right-hand side of the roadway unless otherwise provided in*  
78 *this Manual.*

79 Option:

80 Where special emphasis is needed, signs may be placed on both the left-hand and right-hand  
81 sides of the roadway. Signs mounted on portable supports may be placed within the roadway  
82 itself. Signs may also be mounted on or above barricades.

83 Support:

84 The provisions of this Section regarding mounting height apply unless otherwise provided for  
85 a particular sign elsewhere in this Manual.

86 **Standard:**

87 The minimum height, measured vertically from the bottom of the sign to the elevation  
88 of the near edge of the pavement, of signs installed at the side of the road in rural areas  
89 shall be 5 feet (see Figure 6F-1).

90 The minimum height, measured vertically from the bottom of the sign to the top of the  
91 curb, or in the absence of curb, measured vertically from the bottom of the sign to the  
92 elevation of the near edge of the traveled way, of signs installed at the side of the road in  
93 business, commercial, or residential areas where parking or pedestrian movements are  
94 likely to occur, or where the view of the sign might be obstructed, shall be 7 feet (see Figure  
95 6F-1).

96 The minimum height, measured vertically from the bottom of the sign to the sidewalk,  
97 of signs installed above sidewalks shall be 7 feet.

98 The bottom of a sign mounted on a barricade, or other portable support, shall be at  
99 least 1 foot above the traveled way.

100 Option:

101 The height to the bottom of a secondary sign mounted below another sign may be 1 foot less  
102 than the height provided in Paragraphs 4 through 6.

103 *Guidance:*

104 *Neither portable nor permanent sign supports should be located on sidewalks, bicycle*  
105 *facilities, or areas designated for pedestrian or bicycle traffic.*

106 **Standard:**

107 **Signs shall be mounted and placed in accordance with Section 307 of the “2010 ADA**  
108 **Standards for Accessible Design (see Section 1A.05).**

109 *Guidance:*

110 *Except as provided in Paragraph 12, signs mounted on portable sign supports that do not*  
111 *meet the minimum mounting heights provided in Part 2 should not be used for a duration of*  
112 *more than 3 days.*

113 Option:

114 The R9-8 through R9-11a series, R11 series, W1-6 through W1-8 series, M4-10, E5-1, or  
115 other similar type signs (see Figures 6G-1, 6H-1, and 6I-1) may be used on portable sign  
116 supports that do not meet the minimum mounting heights provided in Part 2 for longer than 3  
117 days.

118 Support:

119 Methods of mounting signs other than on posts are illustrated in Figure 6F-2.

120 *Guidance:*

121 *Signs mounted on Type 3 Barricades should not cover more than 50 percent of the top two*  
122 *rails or 33 percent of the total area of the three rails.*

123 **Standard:**

124 **Signs and sign supports used together shall be crashworthy [\(see Section 1D.13\)](#). Where**  
125 **large signs having an area exceeding 50 square feet are installed on multiple breakaway**  
126 **posts, the clearance from the ground to the bottom of the sign shall be at least 7 feet. [\[add](#)**  
127 **[reference\]](#)**

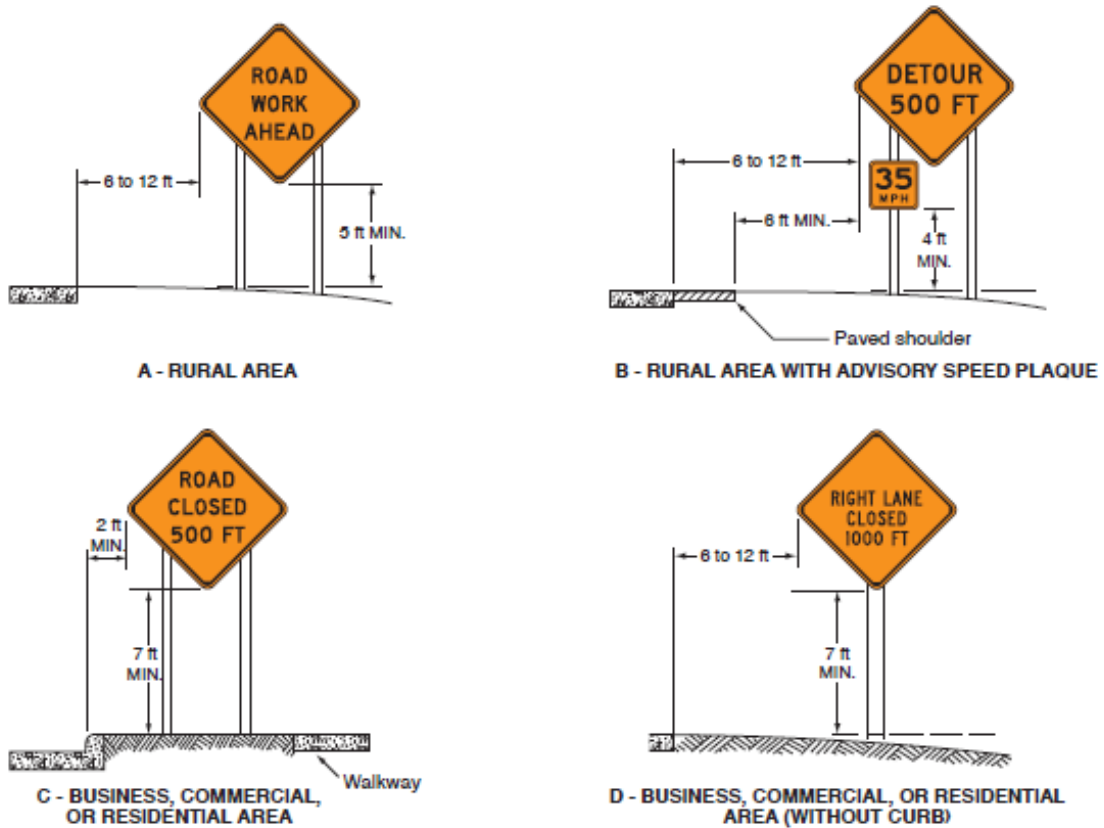
128 Option:

129 For mobile operations, a sign may be mounted on a work vehicle, a shadow vehicle, or a  
130 trailer stationed in advance of the TTC zone or moving along with it.

133  
134

**Figure 6F-1 Comments:** NCUTCD agrees with Figure 6F-1 as presented in the NPA.

**Figure 6F-1. Height and Lateral Location of Signs—Typical Installations**

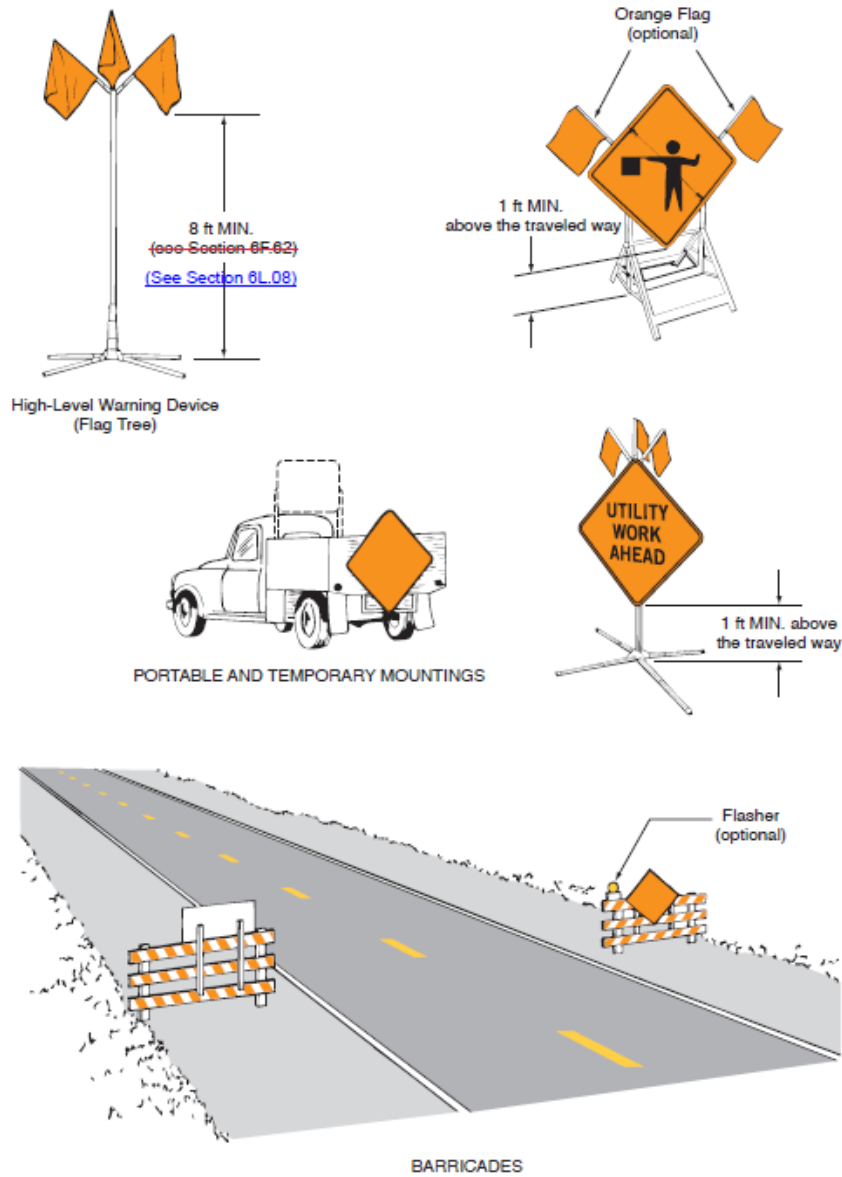


135

136 **Figure 6F-2 Comments:** NCUTCD generally agrees with Figure 6F-2, but recommends the  
137 following:

- 138 • Revise callout to reference the correct section for the High-Level Warning Device (Flag  
139 Tree)
- 140 • Update the graphics in the figure to depict contemporary implements such as the truck and  
141 sign supports

**Figure 6F-2. Methods of Mounting Signs Other Than on Posts**



142  
143  
144

145  
146  
147  
148  
149  
150  
151  
152  
153  
154  
155  
156

**Section 6F.03 Comments:** NCUTCD agrees with 6F.03 as presented in the NPA.

**Section 6F.03 Sign Maintenance**

*Guidance:*

*Signs should be properly maintained for cleanliness, visibility, retroreflectivity, and correct positioning.*

*Signs that have lost significant legibility should be promptly replaced.*

*Support:*

Section 2A.21 contains information regarding the retroreflectivity of signs, including the signs that are used in TTC zones.