

**RESCINDED
JANUARY 2024**

This Recommended
Change to the MUTCD
was rescinded by the
NCUTCD Council on
January 12, 2024.

ATTACHMENT NO. 9

Approved by NCUTCD Council January 20, 2006

TECHNICAL COMMITTEE RECOMMENDATION

TECHNICAL COMMITTEE: Temporary Traffic Control Committee

DATE OF ACTION: June 23, 2005

TOPIC: Section 6C.08 Tapers

ORIGIN OF REQUEST: Vic Liebe of ATSSA and members of the Task Force chaired by Mr. Liebe

DISCUSSION: The Task Force brought to the TTC Technical Committee the need for additional information concerning tapers and the language in Section 6C.08. The last Option in the section and the last paragraph states a maximum value but not a minimum. The Task Force discussed with the committee the need for a minimum.

COMMITTEE ACTION: The Temporary Traffic Control (TTC) Committee recommends that the National Committee submit the following proposed MUTCD change to sponsors for comments.
Next page are changes voted on.

VOTE: For -19
Opposed - 2
Abstentions - 2

**REFERENCE TO AFFECTED
PAGE NUMBERS IN MUTCD:** Pages 6C-8, Section 6C.08 and Table 6C-3 "Taper Length Criteria for Temporary Traffic Control Zones", TAs 10,11,12, and 27 of the 2003 Edition MUTCD

Deleted: TTC No. 3

Formatted: Font: 12 pt

Formatted: Font: Arial Black, 12 pt

Formatted: Right

Formatted: Font: 12 pt

Formatted: Font: Bold

Deleted: APPROVED IN NCUTCD GENERAL SESSION ON
JANUARY 20, 2006

Formatted: Font color: Red

Formatted: Font: 12 pt, Bold, Font color: Red

Formatted: Font: Bold

Formatted: Font: 12 pt

Deleted: →

**RESCINDED
JANUARY 2024**

This Recommended Change to the MUTCD was rescinded by the NCUTCD Council on January 12, 2024.

Section 6C.08 Tapers, last Option section 4th paragraph, Page 6C-8, (addition in red and bold)

Option:

.....
.....
.....

Traffic should be controlled by a flagger or temporary traffic signal (if sight distance is limits limited), or a STOP or YIELD sign. A short taper having a **minimum length of 15 m (50 ft) and a** maximum of 30 m (100 ft) with channelizing devices at approximately 6.1 m (20 ft) spacing should be used to guide traffic into the ~~one-way~~ one-lane section.

Table 6C-3. Taper Length Criteria for Temporary Traffic Control Zones

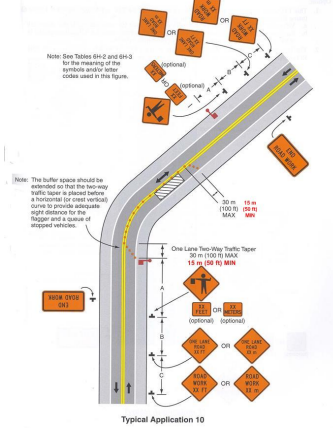
Type of Taper	Taper Length (L)*
Merging Taper	at least L
Shifting Taper	at least 0.5L
Shoulder Taper	at least 0.33L
One-Lane, Two-Way Traffic Taper	30 m (100 ft) maximum 15 m (50 ft) minimum
Downstream Taper	30 m (100 ft) per lane

Formatted: Font: 12 pt

**RESCINDED
JANUARY 2024**

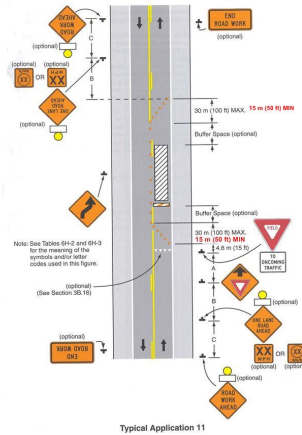
This Recommended
Change to the MUTCD
was rescinded by the
NCUTCD Council on
January 12, 2024.

Figure 6H-10. Lane Closure on Two-Lane Road Using Flaggers (TA-10)



Formatted: Font: 12 pt

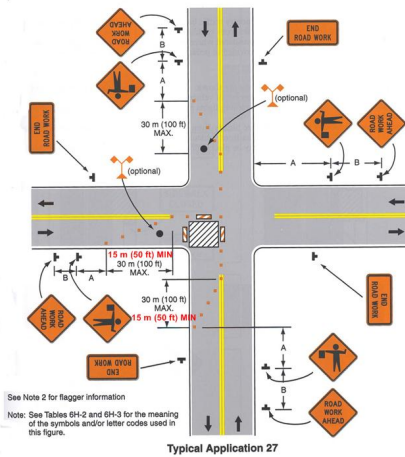
Figure 6H-11. Lane Closure on Two-Lane Road with Low Traffic Volumes



Formatted: Font: 12 pt

This Recommended Change to the MUTCD was rescinded by the NCUTCD Council on January 12, 2024.

Figure 6H-27. Closure at Side of Intersection (TA-27)



Formatted: Font: 12 pt